

Recycling 101

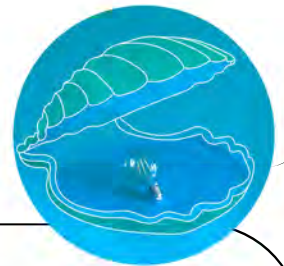


- **Recycling must be clean and dry.**
- **Compostable and biodegradable products are NOT recyclable.**
- **Recycling does not go inside plastic bags.**
- **Black plastic is difficult to recycle.**
- **If in doubt, leave it out!**
(Planet Ark)



What DOESN'T go in the recycling bin:

- Soft plastics
- Bagged recyclables
- Food and organics
- Non-recyclable plastics
- Polystyrene
- Clothing
- Nappies

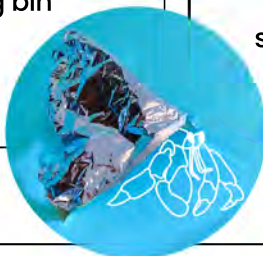


Check the Australasian Recycling Label that can now be found on most packaging



Recyclable:

It can be placed in the recycling bin as is.



Conditionally Recyclable:

It can be recycled under specific circumstances so follow the instructions.



Not Recyclable:

It must be placed in the landfill bin, not the recycling, as it will contaminate the stream.

RECYCLESMART COLLECTS

- **Soft plastics** - plastic that can be scrunched.
- **E-Waste** - product that has a plug or battery.
- **Clothes** - in sellable OR unwearable condition.
- **Misfits** - lightbulbs, batteries and more!

Download our app to always know what goes where in your council or to book a Pickup.



What we collect



Textiles

Sellable condition:

- Backpacks
- Bags
- Belts
- Dresses
- Gilets/vests
- Gloves
- Hats
- Jackets
- Jumpers
- Jeans & Pants
- Purses
- Scarves
- Shirts & T- Shirts
- Shoes
- Shorts
- Skirts
- Slippers
- Soft toys

Non-reusable condition:

- Backpacks
- Linen
- Clothes
- Pillows/cushions
- Shoes
- Soft toys

Please put all your non-reusable items or items that are smaller than the palm of your hand in a separate, labelled bag on top.

We do NOT collect needles/syringes, socks, underwear, swimwear or doonas.



E-Waste

- Alarm clock
- Angle grinder
- Blender and mixer
- Charger cord
- Computer parts incl. mouse & keyboard
- Digital cameras
- Electric cables
- Electric games & toys
- Electric grill
- Electric toothbrush
- Fairy lights & Xmas lights
- Game console
- Hairdryer
- Head & earphones
- Iron
- Kettle
- Laptop
- Microphone
- Mobile phones
- Mp3 player
- Printer
- Radio
- Record player
- Small speakers
- Tablets/e-readers
- Toaster
- Torches
- Vapes
- Video & DVD player
- Waffle maker



Misfits

- Aluminium coffee capsules
- Batteries
- Beer clips
- Books (*in sellable condition*)
- Blister Packs
- Cookware
- Corflutes*
- Cosmetic, hair/skin care (*empty*)
- DVDs & CD's (*sellable condition with covers or unsellable condition without covers*)
- Expired or unwanted medicine*
- Household batteries
- Household lightbulbs (*LED's, halogens, fluorescents*)
- Packaged food (*no alcohol, not near expiration date*)
- Plastic bread tags
- Plastic plant pots*
- Polystyrene* (*only white, no food grade, no peanuts*)
- Printer cartridges
- Reusable water bottles* (*stainless steel and aluminium only*)
- Sealed paint (*maximum 2L*)
- Smoke detectors
- X-rays
- Vapes
- Yoga mats



Soft plastics

- Biscuit packaging
- Bread bags
- Bubble wrap
- Cereal box liners
- Chocolate wrappers
- Citrus netting bags
- Cling wraps
- Confectionary packets
- Document sleeves (*white piece cut off*)
- Fresh produce bags
- Frozen foods bags
- Pasta/Noodles packets
- Plastic film
- Plastic sachets
- Post satchels
- Reusable woven shopping bags
- Rice bags
- Plastic bags
- Silver lined chip bags
- Snaplock bags
- Squeeze pouches



Look for this label!

*Some items may not be available for collection in your area. To find out exactly what items we collect near you:

DOWNLOAD OUR APP:



Recycling made easy!

We pick up tricky-to-recycle items right from your doorstep. It's easy and **free** with a regular collection..

We collect:



Clothes



E-Waste



Misfits
batteries, lightbulbs etc



Soft plastics



Visit recyclesmart.com
or download the app today

